

# MadeForLayers Manual

# Table of Contents

MadeForLayers – Layer management for Adobe InDesign & Illustrator .....	3
MadeForLayers – Overview .....	5
MadeForLayers – Application.....	8
MadeForLayers integration into MadeToPrint .....	19
MadeForLayers integration into MadeToPrint.....	21

# MadeForLayers – Layer management for Adobe InDesign & Illustrator



# MadeForLayers – Overview

MadeForLayers enhances and simplifies the handling of layers in Adobe InDesign and Adobe Illustrator. Users have the option to create layer views, i.e. logical combinations of layers that make handling layers efficient and dependable.

## Versions

MadeForLayers is available for Adobe InDesign and Adobe Illustrator, for both Macintosh and Windows.

### System Requirements:

- Adobe InDesign CS6 – CC
- Adobe Illustrator CS6 – CC
- Mac OS X or Windows

## Feature Overview

MadeForLayers enhances Adobe InDesign and Adobe Illustrator by adding several practical features for the neat and efficient organization of layers:


- Create different layer views organized according to topic-oriented document displays
- Make a certain layer view the default
- Use the currently visible layers to define a new layer view
- Add different layers to a layers view
- Add special metadata to different layers
- Export settings and import into other documents
- Overview of layer views and layers they contain
- Overview of views containing certain layers

Various windows of MadeForLayers:

- Minimal dialog (no editing, only switching possible)
- Normal dialog (switching between views as well as editing)
- Extended dialog (complete control, add metadata)

#### Integration into MadeToPrint:

- Export normal view (to various supported formats, e.g. PDF, PostScript, PNG, etc.)
- Export all layer views into a single PDF/X-4 file
- Export all layer views into separate files (in various formats)

 MadeForLayers is a layers plug-in developed by axaio software for Adobe InDesign and Adobe Illustrator.

If you have any questions or suggestions regarding MadeForLayers, please contact [support@axaio.com](mailto:support@axaio.com).

## Installation


Launch the MadeForLayers installer (Macintosh or Windows) and follow the directions. Administrator rights are required to install the plug-in.

#### The following data is installed on Macs:

- The *axaio software* folder containing the MadeForLayers plug-in is located in the *Plug-Ins* folder of Adobe InDesign or Adobe Illustrator.
- The log files generated by MadeForLayers are located in the user directory under *<username>/Library/Preferences/axaio software*.
- The MadeForLayers documentation is saved in the Users directory under *<User name>/Documents/axaio software documentation*.

#### The following data is installed on Windows systems:

- The *axaio software* folder containing the MadeForLayers plug-in is located in the Program Files directory, for example, under *Adobe InDesign 2021/Plug-Ins*.
- The log files generated by MadeForLayers are located in the *%APPDATA%\axaio software\Adobe InDesign 16\MadeToPrint Plug-In* directory.
- The documentation for MadeForLayers can be opened via the Start menu under *Programs/axaio software documentation*.

 Keep the key code in a safe location and do not forget to send a copy of the completed registration card to axaio software. Only registered customers are entitled to receive updates and technical support.

## Registration

After performing the installation, you can test MadeForLayers for 30 days with without restrictions.

If you have purchased a license for MadeForLayers, you will receive a registration card with a serial number and activation code (key code). To activate the software, enter your name, company and the 24-digit key code in the registration dialog. If you have already registered MadeToPrint for the same version of the Adobe program, MadeForLayers is activated automatically.

You can view information about the registration, license and version of MadeForLayers at any time by going to the *Help menu: About Plug-ins*. Click on *Register* and enter the name, company and 24-digit key code.

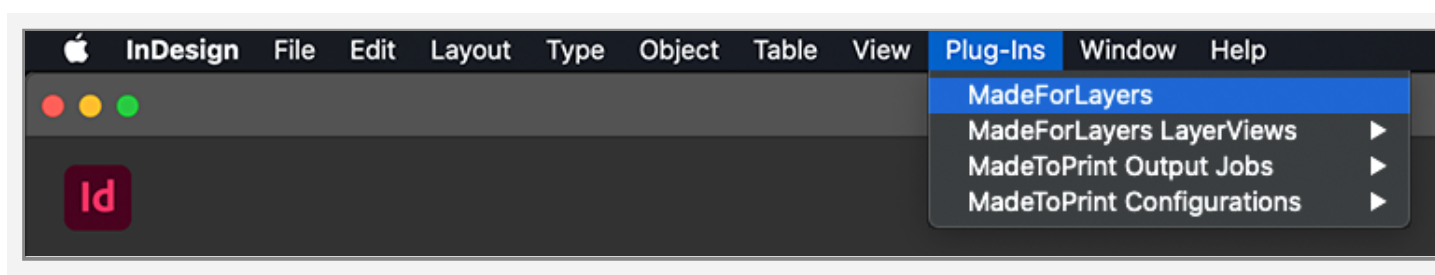
# MadeForLayers – Application

An operator window in MadeForLayers shows all of the layer views that have been created in the document currently opened. Existing layer views can be applied or edited. New layers can be added as well.

## Opening and Using MadeForLayers

MadeForLayers for InDesign and Illustrator has a user interface that intelligently displays and hides layers containing interrelated content.

Users can open the layer management interface by selecting the menu item *Plug-Ins; MadeForLayers*.



## Dialog Overview

MadeForLayers has three dialogs offering several different features.

- Extended dialog
- Normal dialog
- Minimal dialog

**i** Custom keyboard **shortcuts** can be defined to open MadeForLayers. To define these, go to the InDesign



menu and select *Edit; Keyboard Shortcuts...* under the product area *axaio MadeForLayers*.

## Extended dialog



The extended dialog offers all of the options needed to edit layer views, switch between layers and create new ones.

## Normal dialog



In the normal dialog you can switch between layer views and change the visibility of layers. You cannot edit layer views or layers in this dialog. You cannot edit layer views or layers in this dialog.

## Minimal dialog




This very compact, minimized dialog allows you to switch back and forth between the layer views only by using the pop-up.

## Creating layer views

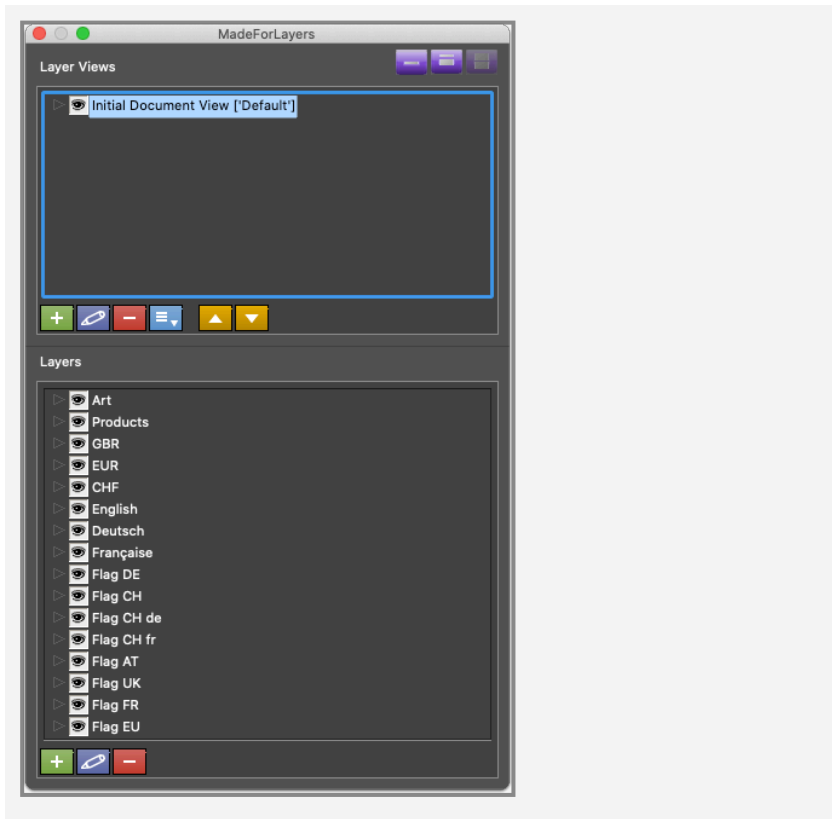
To create layer views, switch to the **extended dialog**. If your document already contains layer views, these are shown in the top part of the window. If no layers have been created, this area remains empty.

The window is divided into two sections. The *layer views* are shown in the top section along with the corresponding buttons for adding, editing and removing layer views, saving, re-setting and for importing and exporting settings. The layers of the document are shown in the lower section of the window along with buttons for creating, deleting and editing these layers.

-  You can also save the layer views as an InDesign or Illustrator template. Documents created using these templates are then automatically given the same layer views.

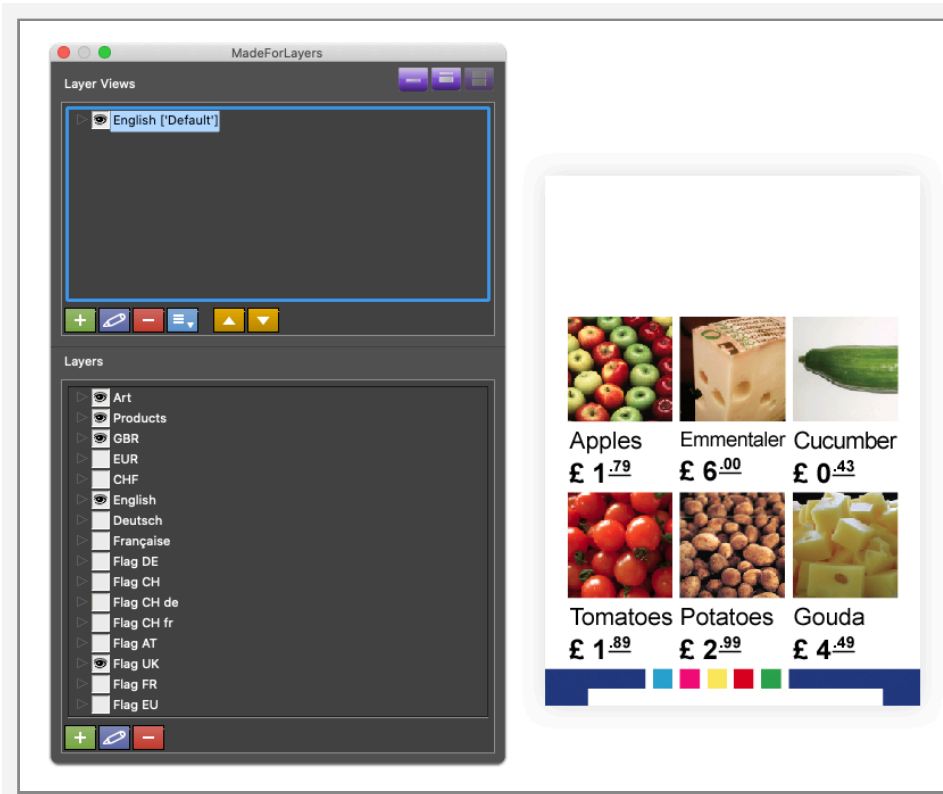
## Configuring a new layer view

The user can add a layer view by clicking on the button with the green plus symbol in the upper section of the layer management window.

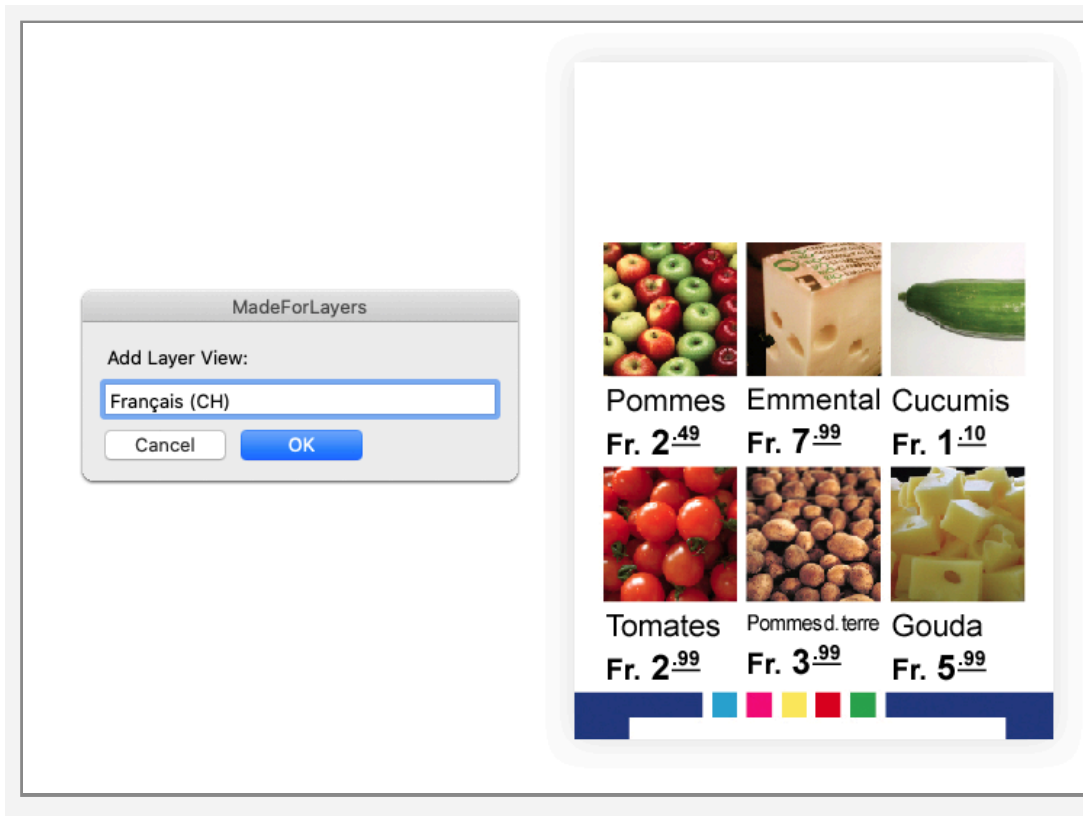



In the following dialog you can give the setting a name. The new layer view is automatically populated with the layers that are currently visible in the document.

The example shows the visibility of the layers for product images, price and text in the English version; the visibility of all other layers is deactivated.

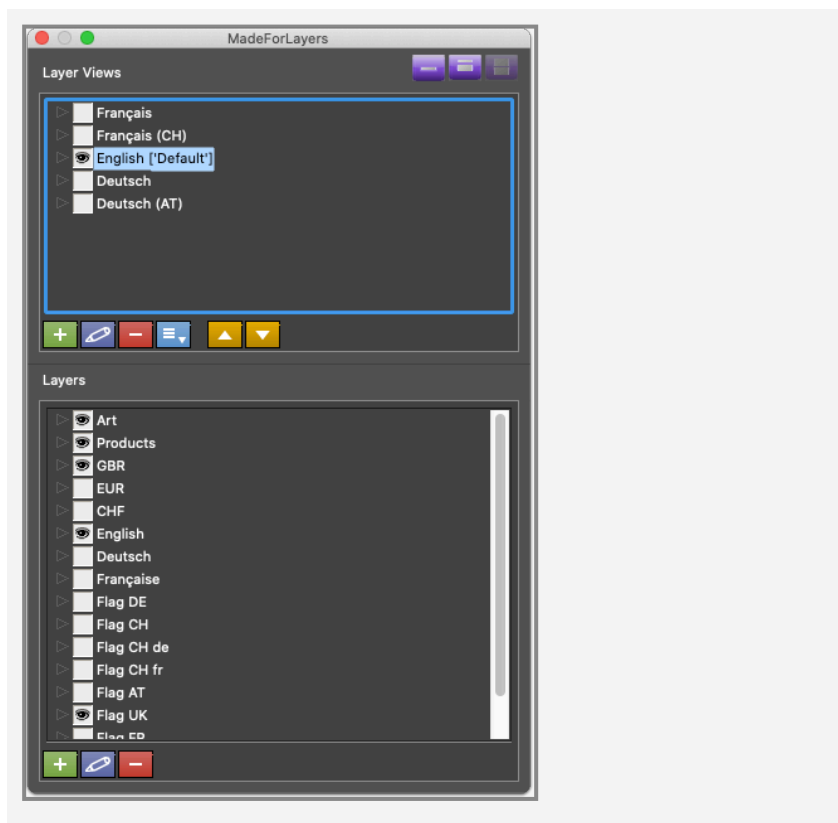


You can use the same procedure to create layer views for additional languages or for technical or marketing-specific views too.



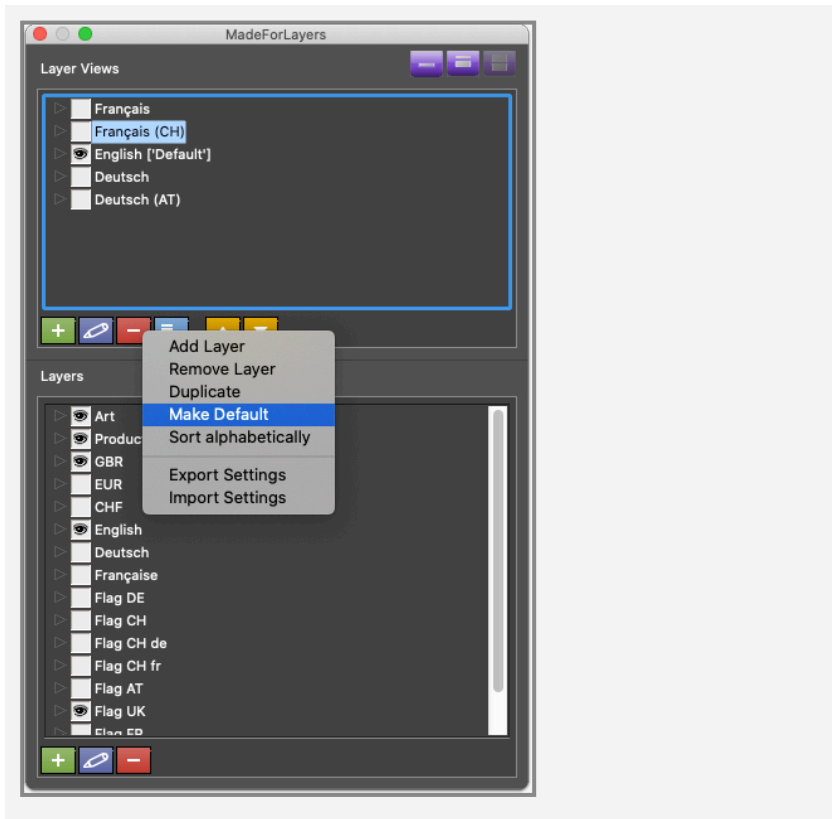
-  MadeForLayers can be used, among other things, for multi-lingual production and for printing packaging.

After configuration, you can click on the items in the layer views in order to switch between the various views of the respective language versions.



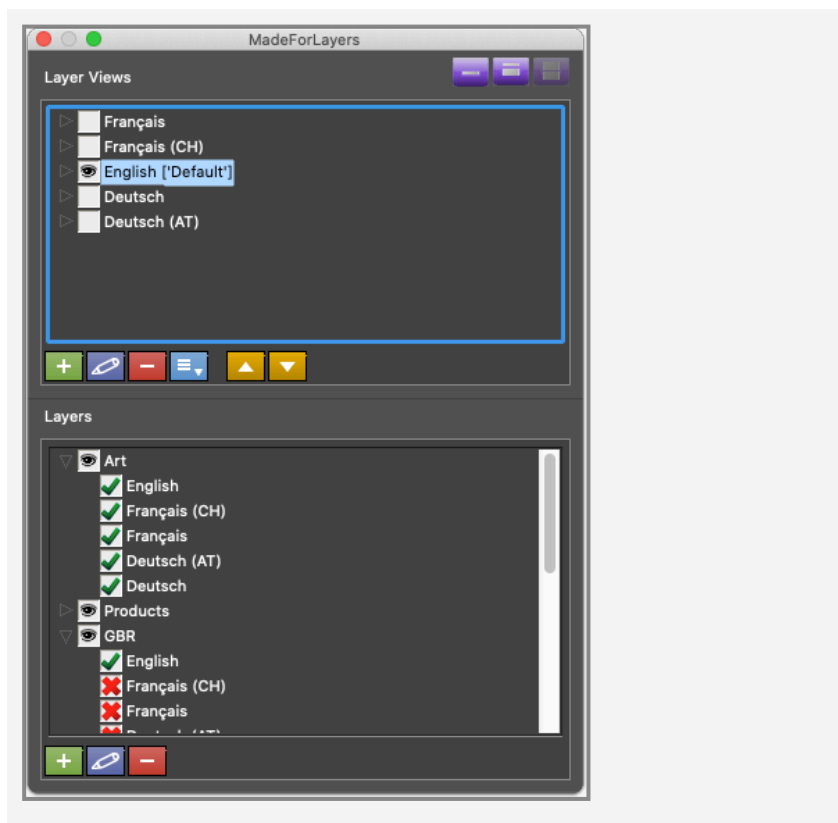
## Making a layer view the default

If you would like to make a certain layer the default view, use the "Make Default" function. This way you can define a default view for multiple layer views – for example, for the print shop.



## Overview: Which layer views contain a certain layer?

The extended view allows the user to expand the layer items in the list and see an overview of the layer views that use the specific layers.

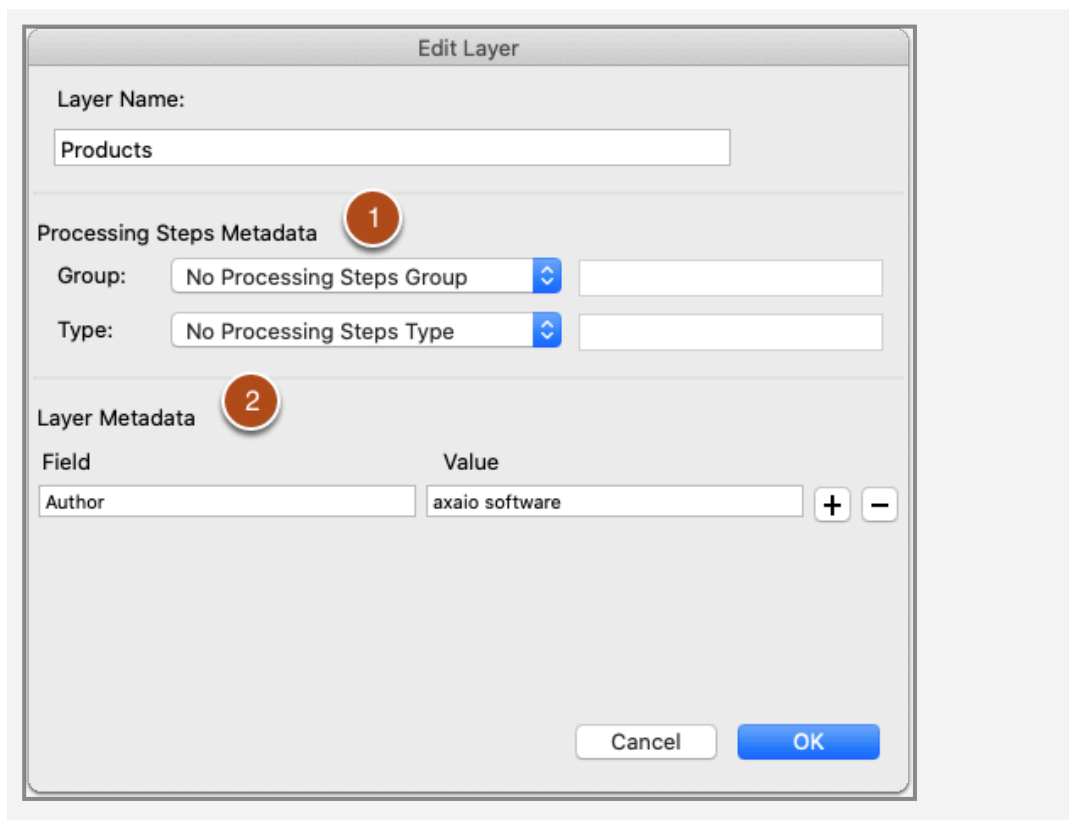


## Adding special metadata to different layers

MadeForLayers allows you to associate metadata directly with a certain layer. The user clicks on the desired layer and clicks the *Edit* button to open the *Edit Layer* window. Here you can complete the *Layer Metadata* fields. MadeForLayers supports *processing steps metadata* (1) and *layer metadata* (2).

*Processing Steps* is useful if you want to pass layer-specific production instructions (e.g. cut, glue, ...) to the PDF. When using MadeToPrint to export the document to a PDF file, these metadata are applied to the respective layer in the PDF document.



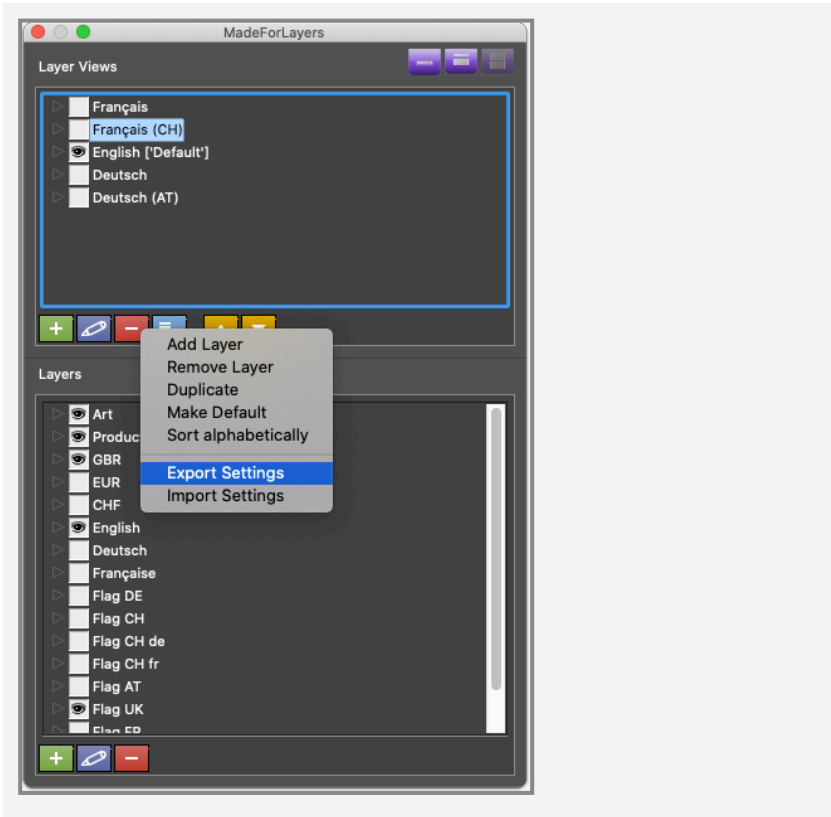


Once a layer does have *processing steps metadata*, it will be displayed after the layer name in the MadeForLayers dialog. This helps to quickly check the intend of the used layers.

- i The integrated pdfToolbox feature from callas software allows metadata layers of the PDF to be displayed.

## Exporting settings and importing them into other documents

For recurring production runs having an identical layer structure, you can optimize the workflow by using the options for importing and exporting settings. This requires that the layer structure and the names of the layers match.



# MadeForLayers integration into MadeToPrint



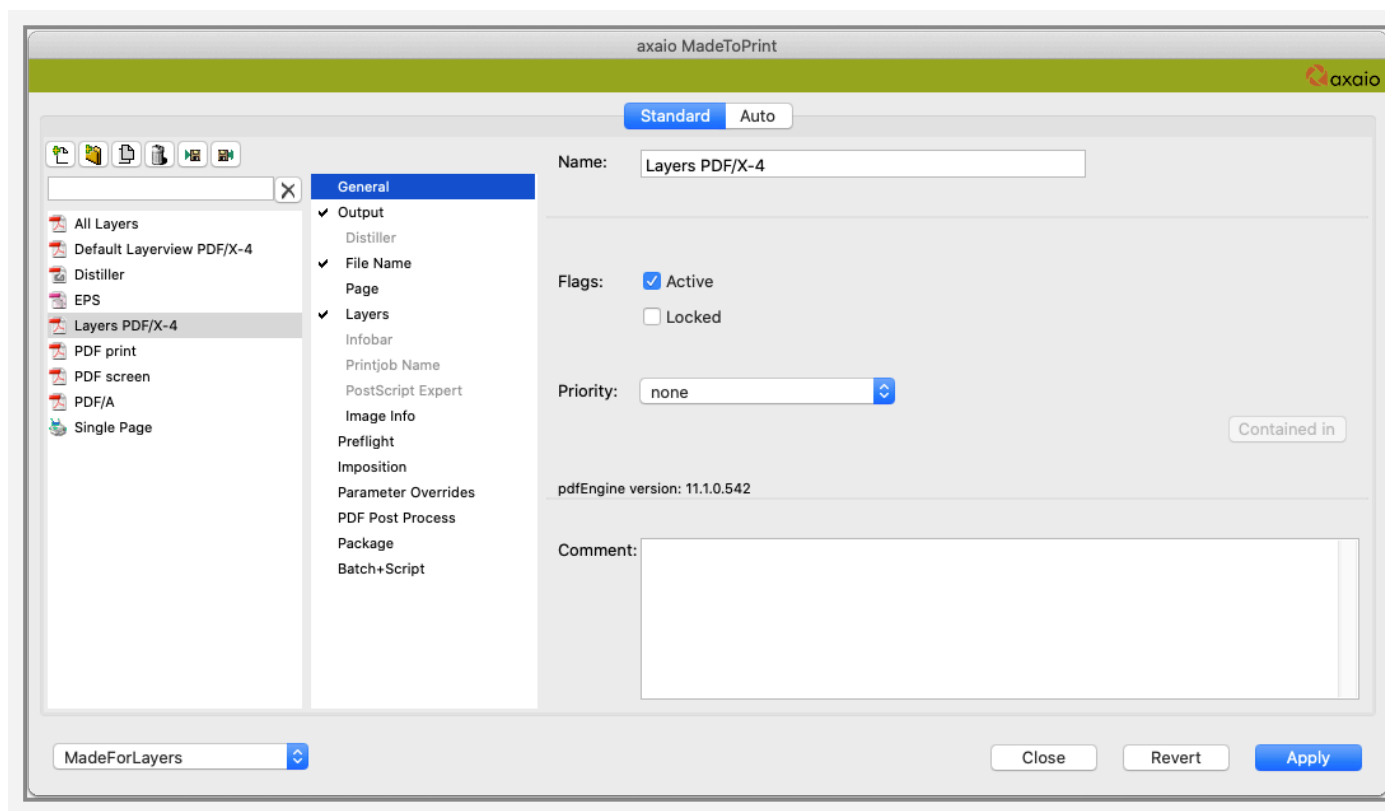
# MadeForLayers integration into MadeToPrint

## Integration in MadeToPrint

MadeToPrint has the capability to use layer views from MadeForLayers for printing and the export to various file formats (including PDF, EPS, various image file formats).

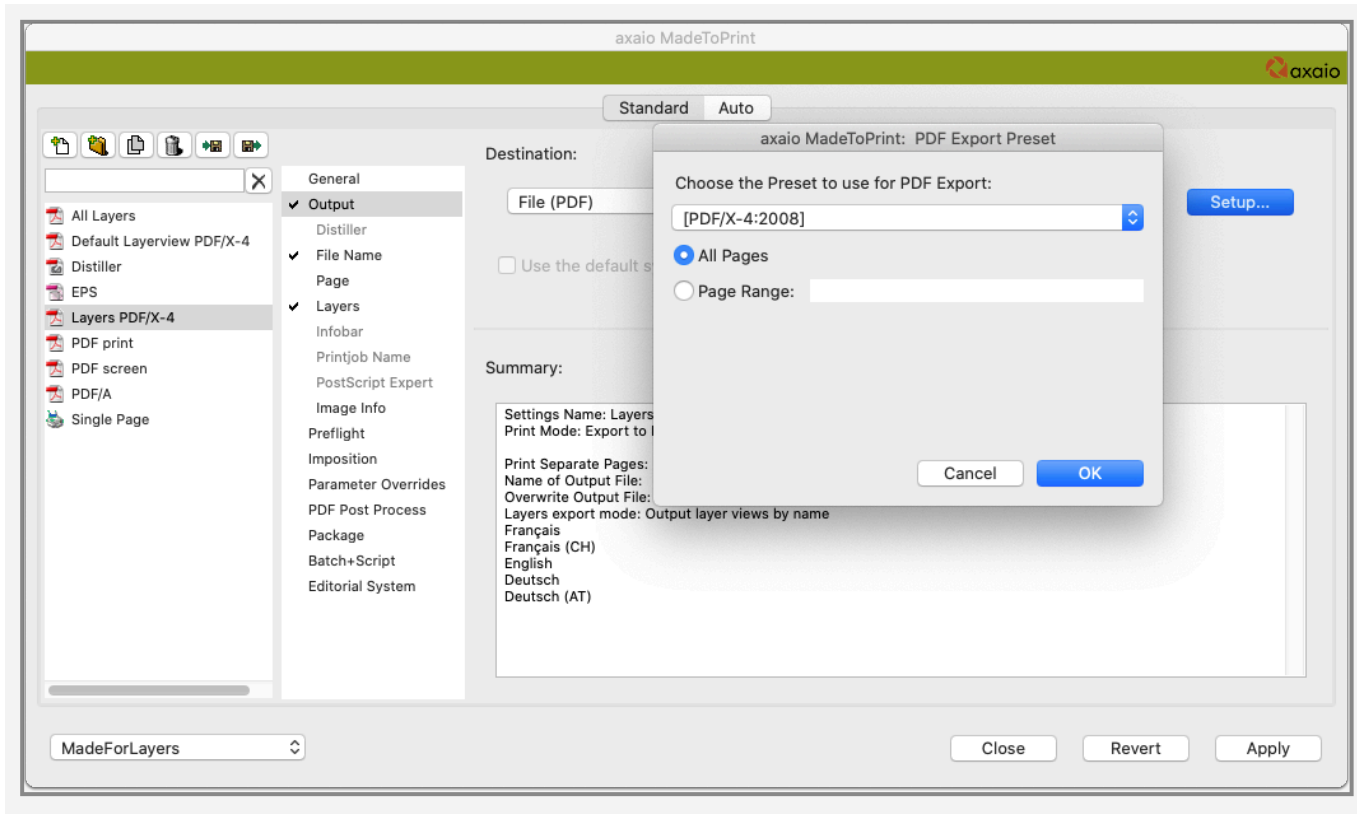
## Example: Exporting all layer views into a single PDF/X-4 file

In this example a MadeToPrint Output Job is created, and the layer views are exported to a PDF/X-4 file.

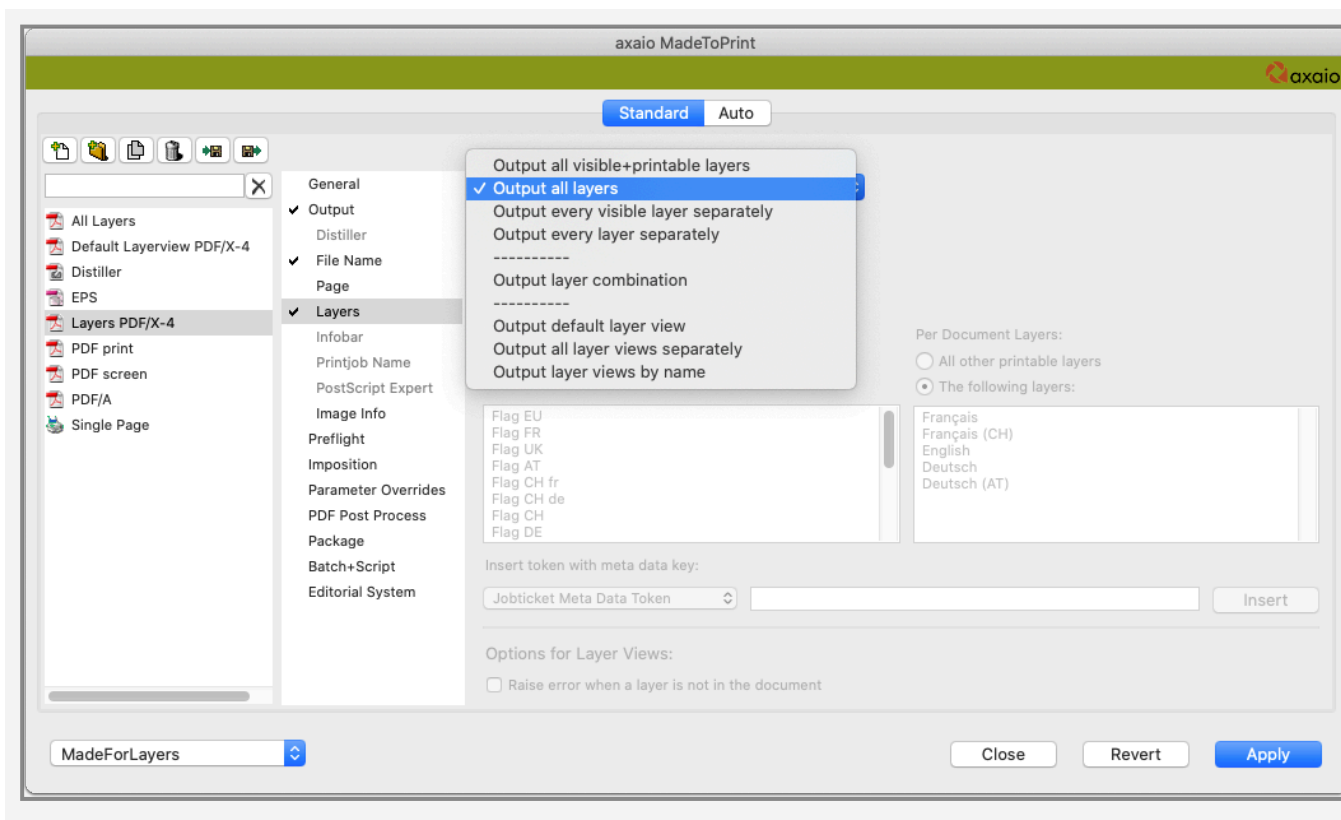


Under *Output* you can select the destination *file (PDF)*. The PDF default settings are opened by clicking the *Setup...* but-

ton. In this example, the default PDF/X-4:2008 is used since it supports PDF/X as well as layers.



Under *Layers* you will find three options that allow you to open the layer views from MadeForLayers. The three modes are listed at the bottom: *Output default layer view*, *Output all layer views separately* and *Output layer views by name*.

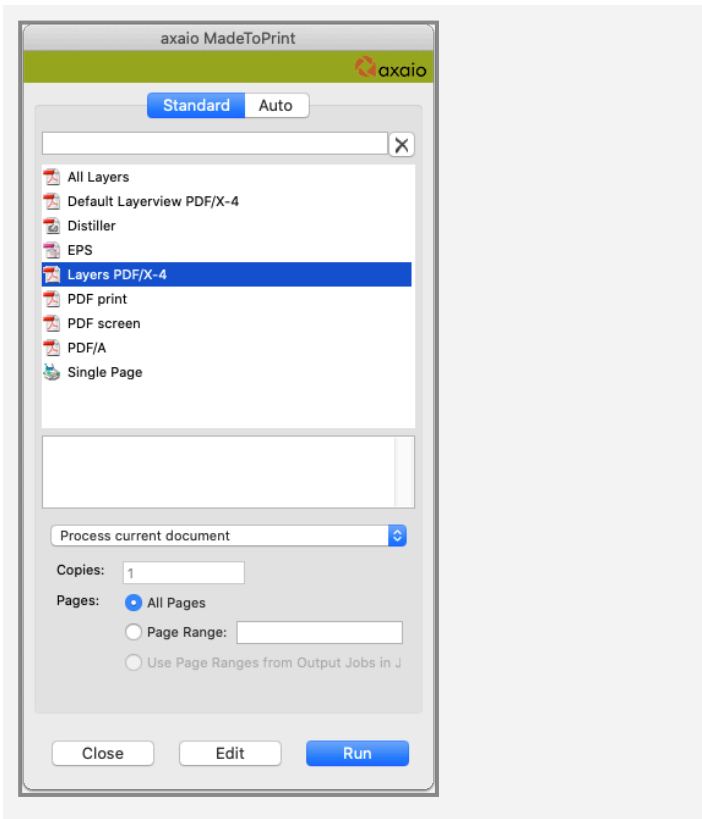


**Output default layer view** - Selecting the first option applies the default view (which you may have defined yourself) to the PDF file.

**Output all layer views separately** - The second option causes all layer views that were created in the original document to be included in the export. Finally, the selection is saved.

**Output layer views by name** - The third setting requires a selection of layer views by name.

In Run Mode of MadeToPrint, you can then select the new Output Job and run it by clicking the *Run* button..



When running this Output Job, you will get – depending on how many layer views have been set up in the InDesign document – multiple PDF files.